

**NEW!**



**Upgradable  
From  
36" to 44"**



Scan Once

HP ready

Canon ready

Epson ready

Add a large-format printer to complete the solution of YOUR choice

## Scan, Copy & Print Large Format Documents.

*Whenever you need them!*

The NEW Colortrac Flex SG Series includes the REVOLUTIONARY SmartLF SG 36c and SG 44c scanners. Colortrac's fastest CCD scanner ever is a full High Definition (HD) scanning system with 1200 dpi optical resolution and benefit from an instant-on LED lighting system providing accurate color capture and productivity from the moment you turn it on with no warm up time and no waiting around!

- 36" and 44" scan width and 1200dpi optical with 9600dpi maximum resolution
- CCD technology with extra long-life, instant-on Bi-directional LED illumination (superior to fluorescent lighting)
- **SuperSpeed** USB3.0 and Gigabit Ethernet providing up to 85 MB/sec data transfer
- SmartWorks Pro SCAN & COPY - professional scanning and color-copying software
- High speed scans at 13 ips (mono) and 4.0 ips (color)
- **SureDrive** paper transport system for reliable document handling
- Fast, high quality scans from power-on, no warm-up, no waiting
- **Scan Once** technology provides a huge workflow advantage. Get it right the first time!
- **Rocket Scanner Controller** (Flex PRO models Only).

SENSOR	SCAN SIZE	OPTICAL DPI	MAX DPI	INTERFACE	INSTANT ON	PAPER LOAD
<b>CCD</b>	<b>36" + 44"</b>	<b>1200</b>	<b>9600</b>	<b>USB 3</b>	<b>YES</b>	<b>DOWN</b>

# Colortrac SmartLF Flex SG Series



The SmartLF Flex SG Series offers the utmost in flexibility, offering your choice of scan widths from 36" or 44". The Repro Stand provides 4 height adjustments with clearance to accommodate printers from 39" to 45" high. The Flex SG Series enables you to turn your existing large format Canon, HP or Epson printer into a complete multi-function system for most all of your scanning, copying and printing needs. The Flex SG Series comes in two basic configurations. The Flex Base model allows you to utilize your own PC and printer where the Flex Pro model includes the Rocket ONE all-in-one controller. Just add a printer for a complete MFP solution. That's FLEXibility!

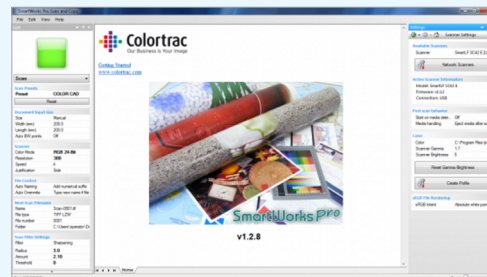
SPECIFICATIONS	SG 36c Flex Base/Pro	SG 44c Flex Base/Pro
Optical Resolution	1200 dpi	1200 dpi
Extended Resolution	9600 dpi	9600 dpi
Max Scan Width	36in (91.4 cm)	44in (111.8cm)
Max Media Width / Thickness	46in (116.9 cm) / 0.6" (15.0 mm)	46in (116.9 cm) / 0.6" (15.0 mm)
Scan Accuracy	+/-0.1% +/-1 pixel	+/-0.1% +/-1 pixel
Imaging Technology	6 x CCDs each with red, green, blue and gray sensor lines. 48-bit color image capture, 16-bit grayscale image capture, black & white (panchromatic full spectrum)	
Data Capture (color/grayscale)	48-bit / 16-bit	48-bit / 16-bit
Color Space	Adobe RGB, Profiled RGB, sRGB and RAW RGB	
Scan Speed - 8-bit grayscale/mono (inch/sec) @200dpi	13 ips	13 ips
Scan Speed - 24-bit color (inch/sec) @200dpi	4 ips	4 ips
Paper Path	Face-down, Front entry, Rear exit, Side load	
Interface	USB 3.0 data transfer rates up to 85MB/sec. Gigabit Ethernet. 2m long USB3 and Gigabit Ethernet cables supplied	
Power Requirements	External power supply 100~240VAC auto-sensing +/-10%, 50-60Hz Scanner power consumption:	
Included Software	SmartWorks Pro Scan & Copy	SmartWorks Pro Scan & Copy
Rocket Controller (Available on the Flex Pro only)	Rocket Controller - 3.2Ghz Dual-core processor (64-bit Processing), 4GB of RAM (upgradable), 500 GB hard drive. Integrated 10/100/1000 Gigabit Ethernet, Full Size Keyboard & Mouse and DVD writer. Windows 7 Professional 64-bit (available through downgrade rights from Windows 8.1 Pro) - optional touchscreen available.	
Warranty	2-Year Onsite	2-Year Onsite

SG Flex Base Includes: SmartLF SG 36 or SG 44 scanner, external scanner power supply, USB 3 cable, document return guides, adjustable Repro Stand with keyboard tray and monitor mounting bracket, SmartWorks Pro Scan & Copy, Rocket scanner controller (Pro model only). The Repro Stand height is adjustable through four height variations allowing maximum printer heights between 39in (988 mm) and 45in (1143 mm).

Specifications subject to change.



## SmartWorks Pro Scan & Copy Professional Software



SmartWorks Pro continues to develop and now gives the user a special new control to enable automatic removal of printed margins during copy or print. Set up the values for your printer then switch on when you need it! SmartWorks Pro - simple but sophisticated.



3010 Red Hill Avenue, Costa Mesa, CA 92626  
888.221.7226 • WWW.PARADIGMIMAGING.COM

