

GRAPHTEC

# CSX550-09

36" Full-Color Image Scanner

## Luxios Multi-Sensor Control

Hi-Speed 64bit Imaging | 48bit Color | Adobe RGB Mode

## CIS Scanning Technology

1200dpi optical resolution, 9600dpi max.

Scan speeds up to 12 ips (mono) & 4 ips (full-color) at 400dpi

Face-up document scanning

0.1% scanning accuracy

**LUXIOS**  
High speed, Real Image Scan Engine.

GRAPHTEC

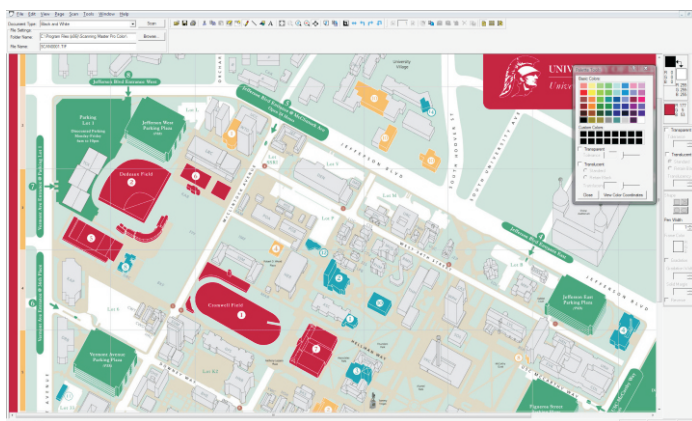
Experience the Graphtec Advantage!

**1** YEAR  
ON-SITE  
WARRANTY

# CSX550-09 Specifications

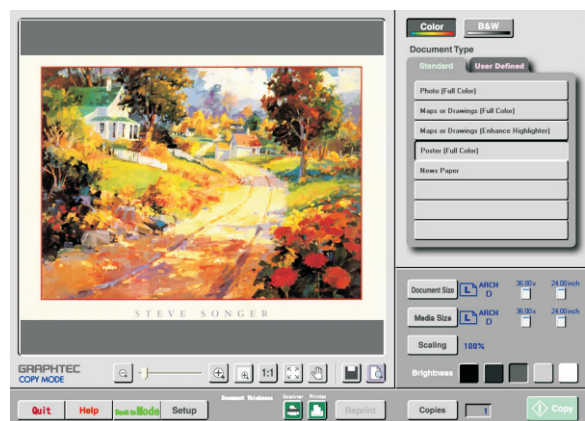
<b>Document thickness</b>	Max. 1.6 mm, Min. 0.05 mm
<b>Margin</b>	0 mm (+/- 0.5 mm)
<b>Scanning system</b>	Main: Contact image sensor (CIS), five A4-size sensors are arranged in a zigzag pattern   Sub: Feeding document
<b>Document loading</b>	Face-up
<b>Optical resolution</b>	1200 dpi
<b>Interpolated resolution</b>	upto 9600 dpi
<b>Max. Scan Speed @ 400 dpi</b>	
Monochrome	12 ips
Gray	12 ips
Color	4 ips
<b>Scanning accuracy</b>	plus or minus 0.1 %
<b>Gradation</b>	Monochrome: Bi-level, Intermediate tones (dithering, error diffusion); Gray: 256 shades; Gray (RGB): 256 shades; Color: 24-bits
<b>Color space</b>	sRGB, AdobeRGB
<b>Sensor</b>	Number of pixel: 22,020 pixels; Output: Color 48-bits/pixel, Gray 16-bits/pixel; Light source: LED (RGB)
<b>Interface</b>	USB2.0 (Hi-speed), LAN (10BASE-T/100BASE-TX/1000BASE-T)
<b>Output</b>	Image data
<b>Power source</b>	100 V to 120 V AC, 200 V to 240 V AC (+/- 10%), 50/60Hz
<b>Operating environment</b>	Temp.: 10 to 35 degree centigrade; Humidity: 25 to 80 % RH (Non-condensing)
<b>Storage environment</b>	Temp.: -20 to 50 degree centigrade; Humidity: 0 to 95 % RH (Non-condensing)
<b>Power consumption</b>	55 W or less (3 W or less in power save mode)
<b>External dimensions (W x H x D)</b>	Without Stand: approx. 1,097 mm x 160 mm x 322 mm; With Stand: approx. 1,097 mm x 972 mm x 717 mm
<b>Weight</b>	Without Stand: approx. 25 kg; With Stand: 39 kg
<b>Supported standards</b>	UL60950 & FCC Part15 class B (USA), CE (Europe), CCC (China)
<b>Included Software</b>	Scanning Master PRO Color, Scanning Arts 2 for WIN
<b>Supported OS for Software</b>	Windows 7 (32-bits & 64-bits), Windows Vista (32-bits & 64-bits), Windows XP Home Edition Professional (32-bits & 64-bits), Windows 2000 Professional

## Scanner MasterPRO Color



Scanning Master PRO Color software enables easy editing and management of image files. It has useful features for file management and file sharing such as image linking, auto de-skew, auto de-speckle, background color suppression, re-touching and deleting together with search function, thumbnail view and display tree of image files.

## Scanning Arts2 for WIN



Scanning Arts 2 software can easily combine existing large-format printers and Graphtec scanners into a large format copy system. Featuring an intuitive and easy to use interface, you can quickly scan, print and copy documents with configurable settings such as document type, size and color and monochrome.