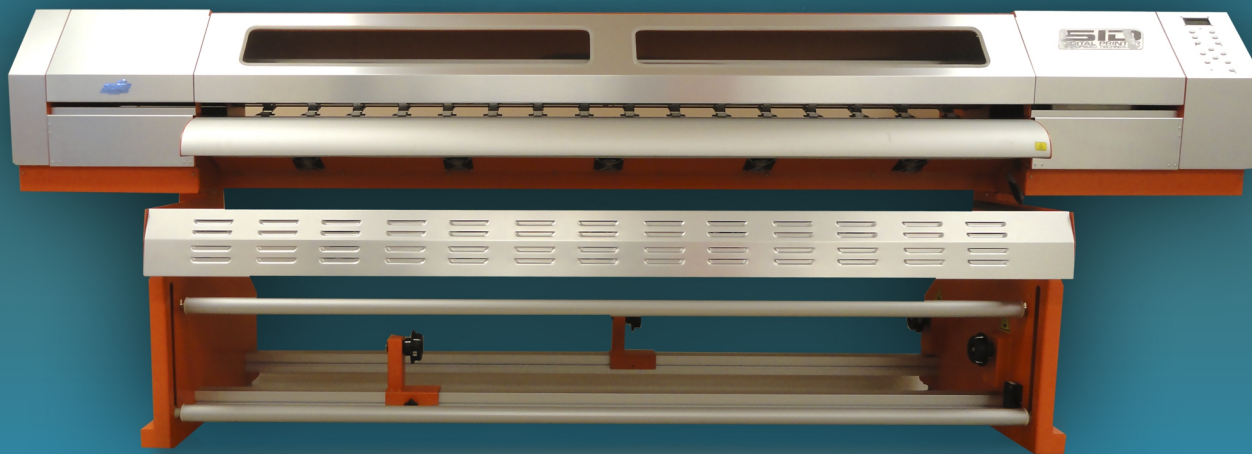


# SID Triton Series

Distributed by Paradigm Imaging Group



## Key Features

- Single or Dual Epson DX5 four-color Print Head
- Print speeds up to 437 sq. ft. /hr (\$ 320)
- True resolution of 2880 dpi
- Variable 7 to 21 picoliter dot sizes
- Max printing area – 126" (\$ 320)
- Automatic cleaning and capping system  
Individual pre, platen and post heaters  
for quick drying
- Bulk ink supply system – 1 liter per color
- Low Operating Costs – ink prices \$64 per liter - 6 cents per sq.ft.
- Adjustable printer carriage height 2mm up to 6mm (1/4")
- PhotoPRINT Cloud
- 1 Year Limited Warranty including Print Heads
- Suggested Retail: Starting at \$16,900 (Triton 160)

## 126", 98", 83" & 63" Wide Format Eco Solvent Printer

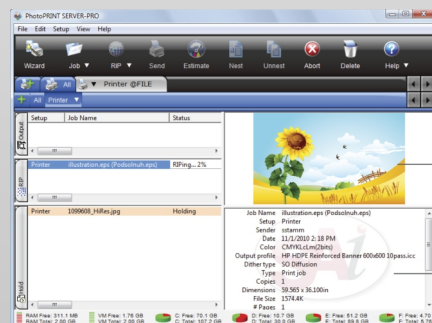
## SID Triton Series

Long known for their rugged production performance, the SID line of wide format printers reaches a new pinnacle with the Triton Series. These eco-solvent printers combine the latest print head technology from Epson with innovative design elements and solid construction. Producing stunningly vivid images at a very low production cost, the Triton will surpass your highest ROI expectations.

The tri-sectional heating system ensures print quality and quick drying, while the balanced automatic media take-up system is flexible and user-friendly. Reliable AC servo motors control the print carriage and media feed systems for peak printing performance. The height adjustable printer carriage enables printing on substrates such as foam board and polystyrene.

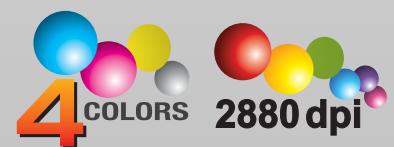
Starting at just \$16,900, the Triton is an affordable, reliable, flexible solution to all your sign and banner production needs.

## PhotoPRINT Cloud



PhotoPRINT Cloud is an unparalleled layout package with design capabilities for text, shapes and effects with the added versatility to RIP and print to two devices simultaneously. The powerful Nesting feature allows you to group multiple print jobs and print multi-page jobs horizontally to optimize media usage. Accurately calculate the true cost of every print job with the new Ink Estimation tool included with PhotoPRINT Cloud.

signage indoor/outdoor banners  
trade show graphics



# Specifications

	Triton 160	Triton S 210	Triton S 250	Triton S 320
<b>Printhead</b>	1440 nozzles • Variable dots • 7 • 14 • 21 picoliters			
<b>Number of printheads</b>	Single Epson 4 color print head	Dual Epson 4 color print head	Dual Epson 4 color print head	Dual Epson 4 color print head
<b>Head height</b>	Adjustable between 2mm (.08") - 6mm (.25")			
<b>Resolution</b>	Up to 2880 dpi			
<b>Ink Cartridges - Type</b>	Eco Solvent			
<b>Colors</b>	CMYK			
<b>Capacity</b>	1 liter per cartridge			
<b>Media</b>				
Max. printing width	63" (1,600 mm)	83" (2100 mm)	98" (2500 mm)	126" (3200 mm)
Feeding System	Roll to roll or single sheet (max. media roll weight: 176 lbs - 80 kg & max. media height: 10mm)			
Types	Vinyl, perforated vinyl, polyester, banners, paper, canvas, foam board and polystyrene			
<b>Output</b>				
720 dpi (4 passes)	161 sq.ft./h (15 m2/h)	365 sq.ft./h (34 m2/h)	387 sq.ft./h (40 m2/h)	437 sq.ft./h (44 m2/h)
1080 dpi (6 passes)	107 sq.ft./h (10 m2/h)	236 sq.ft./h (22 m2/h)	258 sq.ft./h (26 m2/h)	355 sq.ft./h (33 m2/h)
1440 dpi (8 passes)	86 sq.ft./h (8 m2/h)	182 sq.ft./h (17 m2/h)	193 sq.ft./h (20 m2/h)	236 sq.ft./h (22 m2/h)
<b>Cleaning System</b>	Automatic Cleaning and Capping System			
<b>Heating and Cooling System</b>	Pre, platen and post heaters and cooling fans			
<b>Interface</b>	USB 2.0			
<b>RIP Software</b>	Photo PRINT Cloud			
<b>Voltage</b>	AC 220V / 230V, 50Hz / 60Hz			
<b>Operational Temperature</b>	Temperature 68-74°F (20-23°C) Humidity 40% ~ 60%, non-condensing			
<b>Equipment dimensions (L x W x H)</b>	111" x 34" x 50"	133" x 39" x 50"	148" x 39" x 50"	177" x 35" x 50"
<b>Package dimensions (L x W x H)</b>	115" x 38" x 33"	137" x 43" x 33"	153" x 43" x 33"	180" x 43" x 37"
<b>Equipment weight</b>	333 lbs (151 kg)	496 lbs (242 kg)	565 lbs (242 kg)	670 lbs (242 kg)
<b>Package weight</b>	686 lbs (311 kg)	930 lbs (430 kg)	1007 lbs (430 kg)	1205 lbs (430 kg)

\* Specifications subject to change without notice. Data speed can vary as much as 5% depending on the speed of the computer.  
Data speed can vary as much as 5% depending on the speed of the computer.

Datasheet - 2015/01



**1 Year Limited Warranty**

**Paradigm Imaging Group** - Distributor of Large Format Scanning & Printing Solutions!  
3010 Red Hill Avenue, Costa Mesa, CA 92626 | 888.221.SCAN(7226) or 714.432.7226 in Canada  
[www.paradigmimaging.com](http://www.paradigmimaging.com)