

SID Mercury 320 Series

Distributed by Paradigm Imaging Group

126" | Featuring 1440dpi!



Key Features

- 4 or 6 Seiko print heads
- 4 or 6 colors - CMYK or CMYKLCm
- Resolution up to 1440 dpi
- Print speeds up to 979 sq.ft./hr.
- Bulk ink supply system – 5 liters per color
- Low operating costs
- Photoprint DX RIP
- 1 year limited warranty
- Starting at \$39,500

126" Solvent / Eco Solvent Wide Format Printer

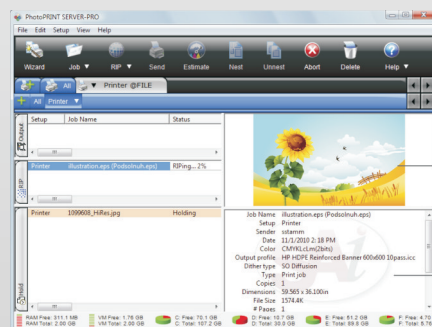
Mercury 320 Series

A long-standing mainstay in the wide format printer market, the Mercury 320 is a well-built production powerhouse, utilizing proven Seiko print head technology for dynamic colors and excellent outdoor durability. With some of the lowest ink prices available, the Mercury 320 produces unmatched performance and profit.

The 5 liter per color bulk ink supply system allows for uninterrupted printing of billboards, banners, floor graphics, vehicle wraps and more. Maintenance is trouble-free with an Automatic Individual Positive Pressure System, allowing for either individual or simultaneous print head purging for maximum ink conservation.

The Mercury 320 features pre, platen and post heaters plus two additional front infrared heaters. A powerful fan system rounds out the ink curing and drying process for ultimate production speed and efficiency.

PhotoPRINT DX RIP Software



PhotoPRINT DX is an unparalleled layout package with design capabilities for text, shapes and effects with the added versatility to RIP and print to two devices simultaneously. The powerful Nesting feature allows you to group multiple print jobs and print multi-page jobs horizontally to optimize media usage. Accurately calculate the true cost of every print job with the new Ink Estimation tool included with PhotoPRINT.

signage indoor/outdoor banners
trade show graphics



Specifications

	Mercury 320	Mercury GS 320
Printhead	SEIKO • 1020 nozzles • 35 picoliters	SEIKO • 508 nozzles • 12 picoliters
Number of printheads	4 or 6 printheads	
Resolution	Up to 720 dpi	Up to 1440 dpi
Ink	Solvent or Eco Solvent	
Colors	CMYK (4 printheads) or CMYKLcLm (6 printheads)	
Capacity	Main tanks: 5 liters per color + flush	
Media		
Max. printing width	126" (3200 mm)	
Feeding System	Roll to roll or single sheet (max. media weight: 264 lbs - 120 kg)	
Types	Banner, Mesh, Vinyl, Perforated Vinyl, Paper, Polyester Fabric, Canvas, etc	
Output		
Standard Output / Print Mode	(785 sq.ft./h) - 240 x 720 dpi (2 passes) (624 sq.ft./h) - 180 x 1080 dpi (3 passes) (473 sq.ft./h) - 180 x 1440 dpi (4 passes) (312 sq.ft./h) - 180 x 1080 dpi (6 passes) (226 sq.ft./h) - 180 x 1440 dpi (8 passes)	(979 sq.ft./h) - 720 x 360 dpi (2 passes) (656 sq.ft./h) - 720 x 540 dpi (3 passes) (495 sq.ft./h) - 720 x 720 dpi (4 passes) (333 sq.ft./h) - 720 x 1080 dpi (6 passes) (247 sq.ft./h) - 720 x 1440 dpi (8 passes)
Cleaning System	Automatic Individual Positive Pressure System	
Heating and Cooling System	Pre, platen, post and two post infrared heaters with a powerful fan system	
Interface	USB 2.0	
Noise Level	Printing: < 70 dB Standby: < 40 dB	
RIP Software	Photo PRINT DX	
Voltage	AC 220 V, 50 Hz / 60 Hz	
Power Consumption	4,560 W 21 A	
Operational Temperature	Temperature 68°F - 82°F (20°C - 28°C) Humidity 40% - 60%, non-condensing	
Equipment dimensions (L x W x H)	187" x 45" x 53" (4,766 x 1,160 x 1,350 mm)	
Package dimensions (L x W x H)	196" x 45" x 64" (4,980 x 1,140 x 1,620 mm)	
Equipment weight	Net weight 1,596 lbs (724 kg) Gross Weight 2,346 lbs (1064 kg)	

*Specifications subject to change without notice. Data speed can vary as much as 5% depending on the speed of the computer.



1 Year Limited Warranty