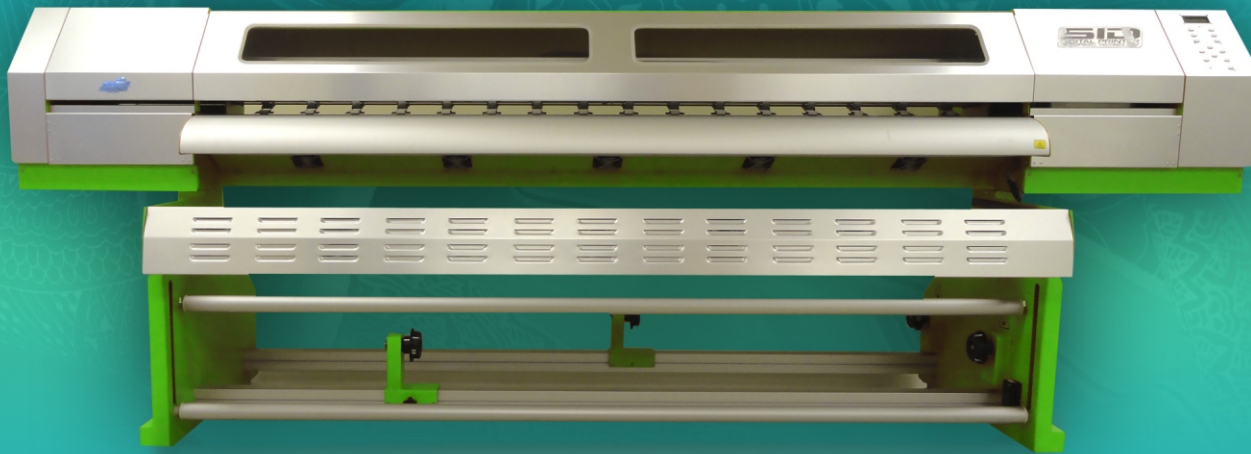


# SID Triton TX 180

Distributed by Paradigm Imaging Group



## Key Features

- Dual Epson DX5 print heads – 1440 nozzles – Variable dots – 7 to 21 picoliters
- 4 colors – CMYK
- Resolution up to 1440 dpi
- Print speeds up to 430 sq. ft./hr.
- Bulk ink supply system – 1 liter per color
- Low operating costs
- Photoprint DX RIP
- 1 year limited warranty
- Suggested Retail: \$39,500

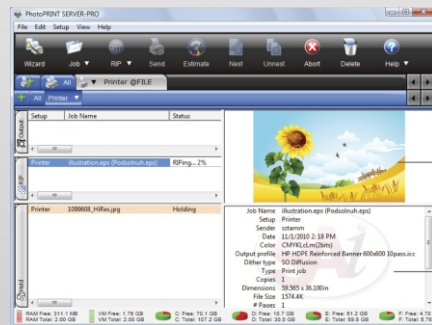
Includes heater unit that supports up to 3 Triton TX 180 printers

## 72" Textile Wide Format Printer

# SID Triton TX 180

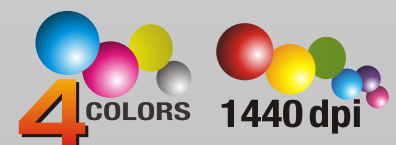
With speeds up to 430 sq.ft./hr., dual, adjustable Epson DX5 print heads and the ability to print on a variety of fabrics WITHOUT the need for paper liners, the SID TX 180 is fast, affordable and economical. Specially formulated inks produce strikingly vivid images at a fraction of the cost of competitive models. Create custom fabrics for interior design, fashion and sports apparel, in addition to flags, banners and a host of other soft signage applications. Stretch your production capabilities to new lengths with the SID TX 180!

## PhotoPRINT DX 10 RIP Software



PhotoPRINT DX 10 is an unparalleled layout package with design capabilities for text, shapes and effects with the added versatility to RIP and print to two devices simultaneously. The powerful Nesting feature allows you to group multiple print jobs and print multi-page jobs horizontally to optimize media usage. Accurately calculate the true cost of every print job with the new Ink Estimation tool included with PhotoPRINT.

signage indoor/outdoor banners  
trade show graphics



# Specifications

	<b>Triton TX 180</b>
<b>Printhead</b>	1440 nozzles • Variable dots • 7 • 14 • 21 picoliters
<b>Number of printheads</b>	Dual Epson 4 color print heads
<b>Resolution</b>	Up to 1440 dpi
<b>Ink Cartridges - Type</b>	Dye
<b>Colors</b>	CMYK
<b>Capacity</b>	1 liter per cartridge
<b>Media</b>	
Max. printing width	72" (1830 mm)
Feeding System	Equiped
Types	Polyester Fabric or Transfer
<b>Output</b>	
	430 sq.ft./h (40 m2/h) 360 dpi (2 passes)
	269 sq.ft./h (25 m2/h) 540 dpi (3 passes)
	236 sq.ft./h (22 m2/h) 720 dpi (4 passes)
<b>Cleaning System</b>	Automatic Cleaning and Capping System
<b>Heating and Cooling System</b>	Pre, platen and post heaters and cooling fans
<b>Interface</b>	USB 2.0
<b>RIP Software</b>	Photo PRINT DX 10
<b>Voltage</b>	AC 220 V, 50 Hz / 60 Hz
<b>Power Consumption</b>	Heater: 1,200W (5,5A) Printer: 560W (2.5A)
<b>Operational Temperature</b>	68° - 77° F (20° - 25° C) Humidity 40 - 60%, non condensing
<b>Equipment dimensions (L x W x H)</b>	121" x 39" x 49" (3,080 x 990 x 1,250 mm)
<b>Package dimensions (L x W x H)</b>	125" x 43" x 39" (3,190 x 1,100 x 990 mm)
<b>Equipment weight</b>	511 lbs (232 kg) lbs.(Equipment) / 882 lbs. (Packaged)

\*Specifications subject to change without notice. Data speed can vary as much as 5% depending on the speed of the computer.

# SID Calandra Dye Sublimation Heat Fixation Unit

<b>Power</b>	AC220-240V, 16A, 50/60Hz
<b>Power Consumption</b>	3500W
<b>Media Width</b>	79" (2000 mm)
<b>Temperature</b>	68 - 86° F (20 - 30° C)
<b>Humidity</b>	40 - 60% (Non-condensing)
<b>Weight</b>	1,047 lbs (475 kg)
<b>Main Machine</b>	36 x 30 x 102" (910 x 750 x 2600 mm)
<b>Filtering Unit</b>	37 x 19 x 19" (930 x 480 x 480 mm)

