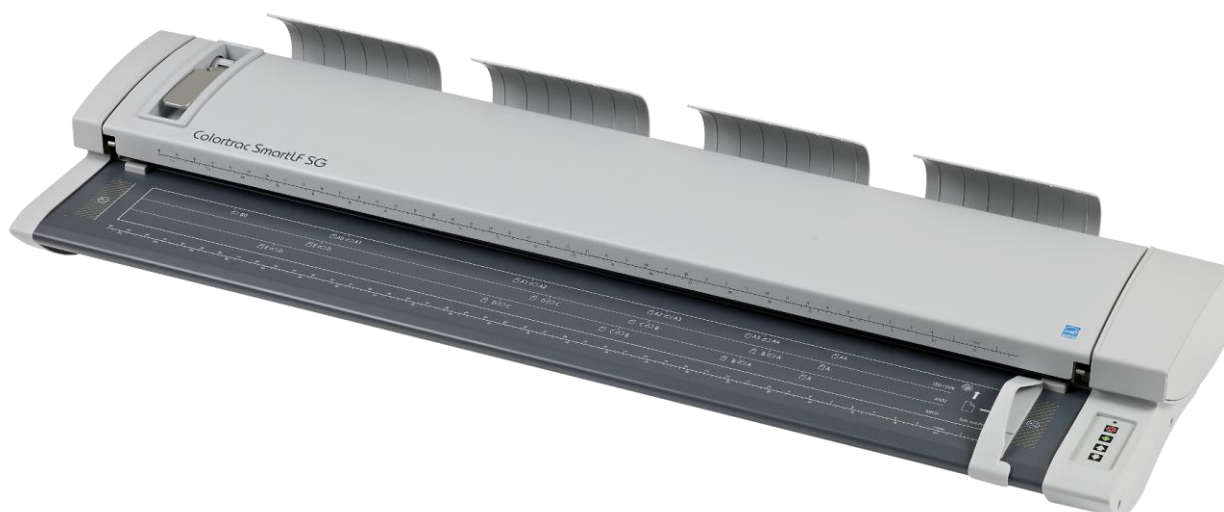


User Instructions

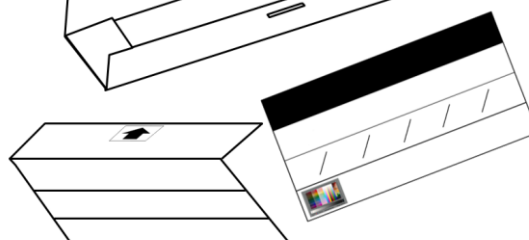
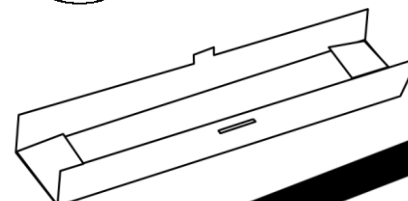
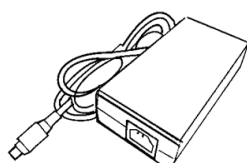
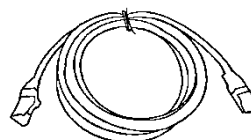
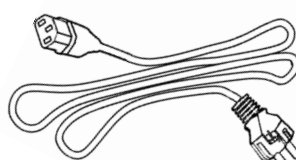
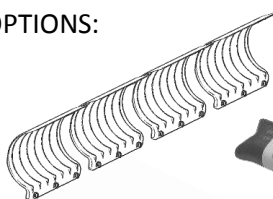
For SmartLF SG
Large Format Scanner
Rev.F September 2014



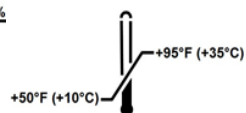
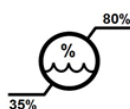
1



OPTIONS:

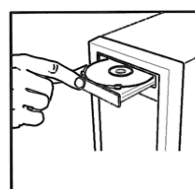


2



3

SmartLF SG



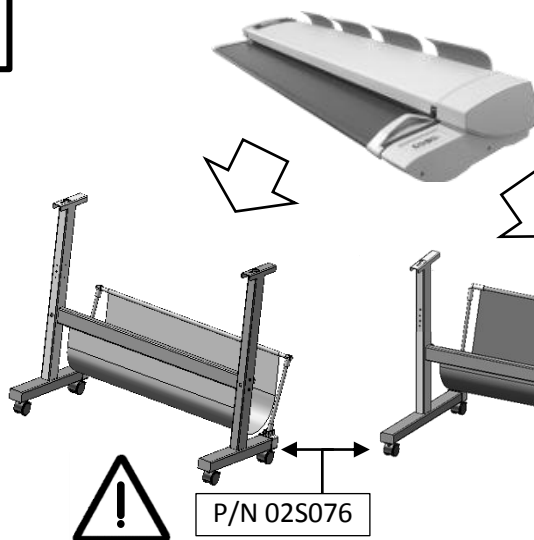
INSTALL

 SmartLF SG Utilities
 SmartLF SG Utilities

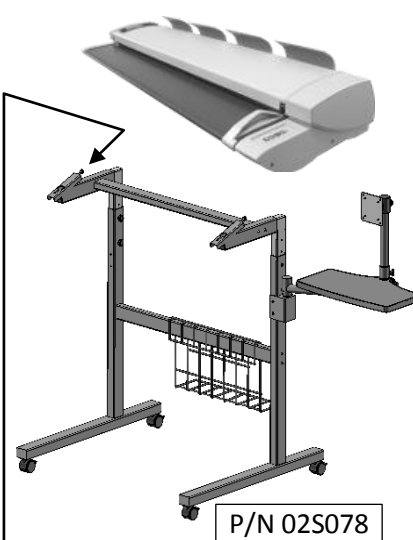

OPTION 09A006 / 09A008

 SmartWorks Pro
 SmartWorks Pro

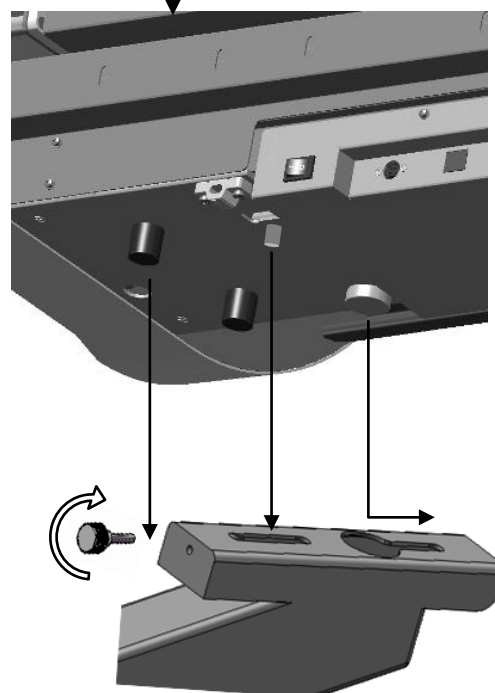
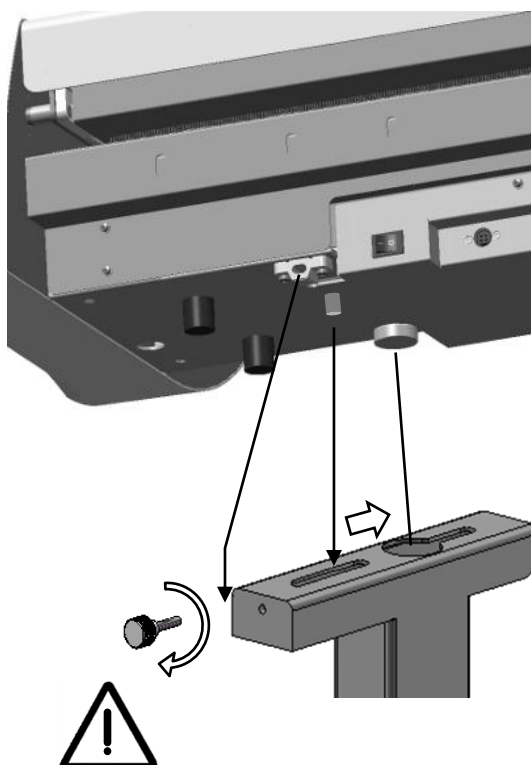
4



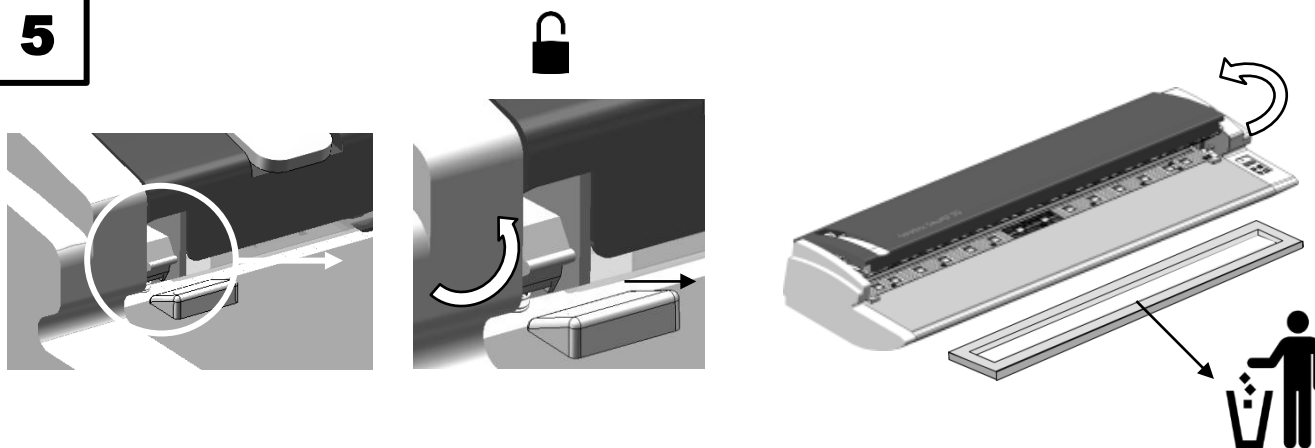
P/N 02S076



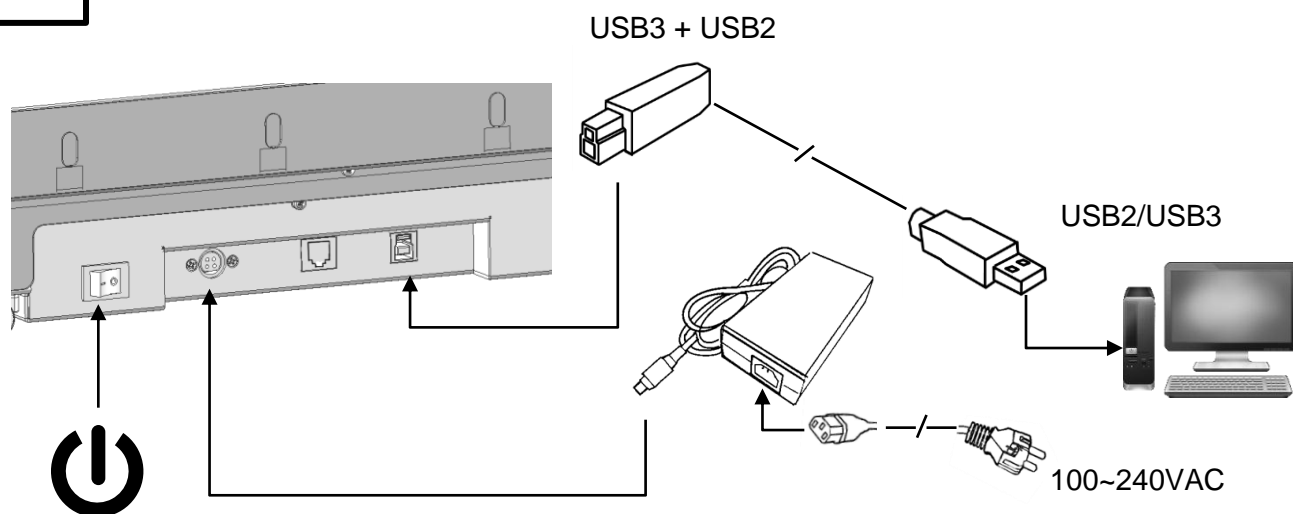
P/N 02S078



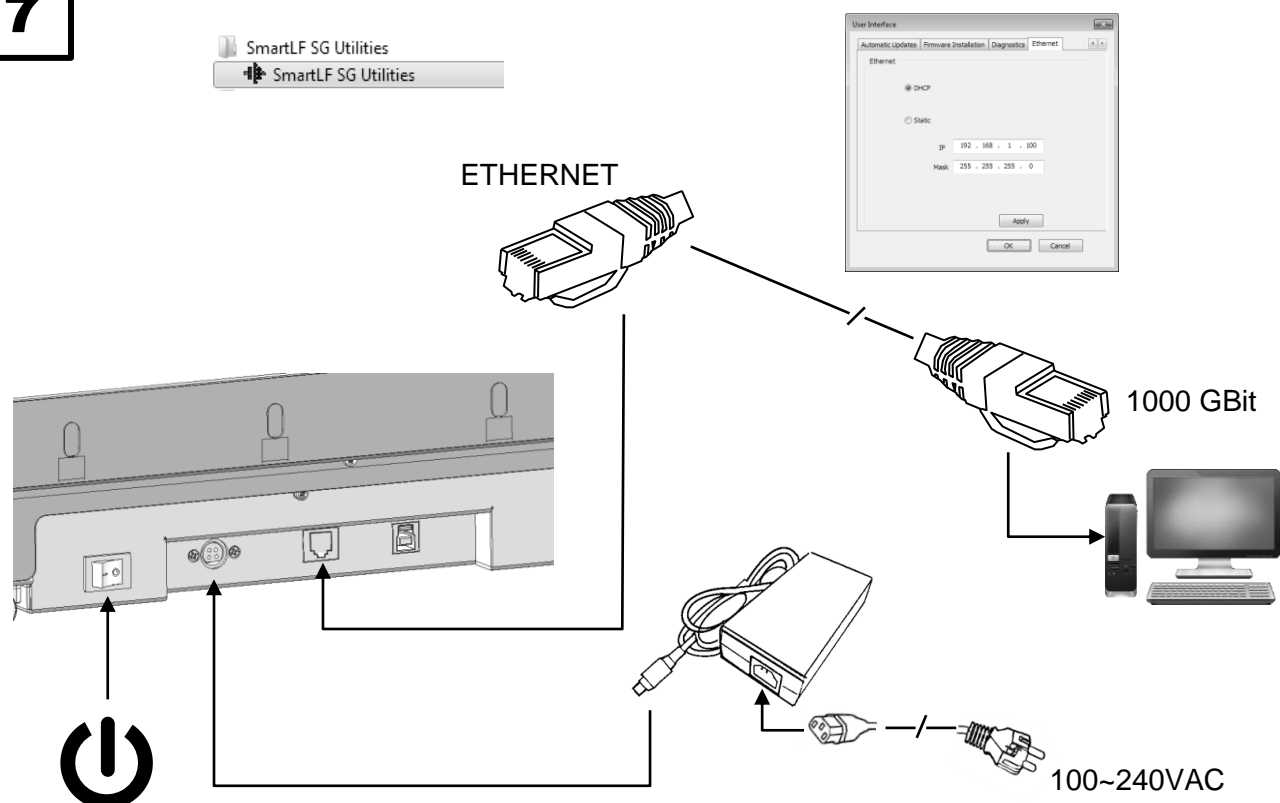
5



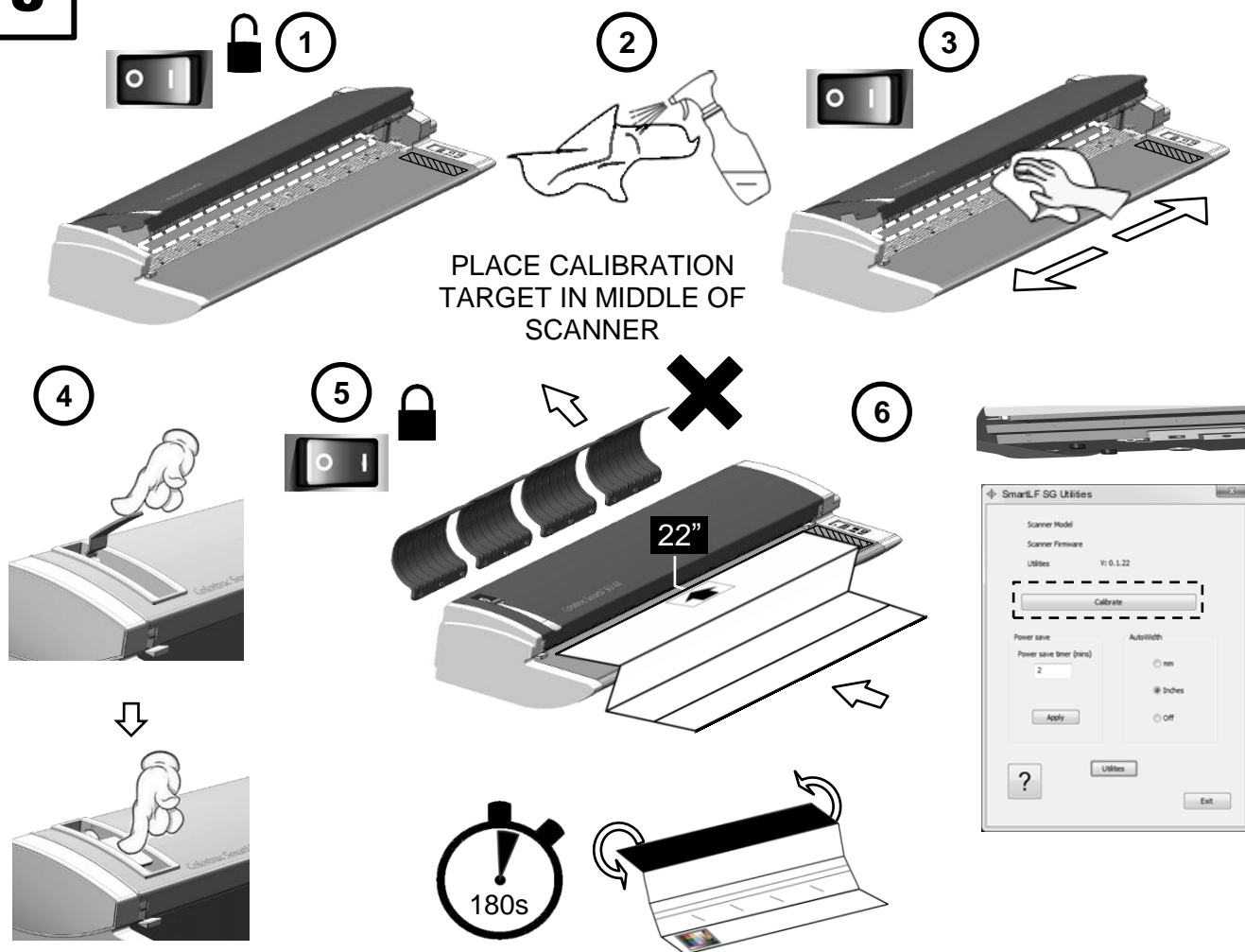
6



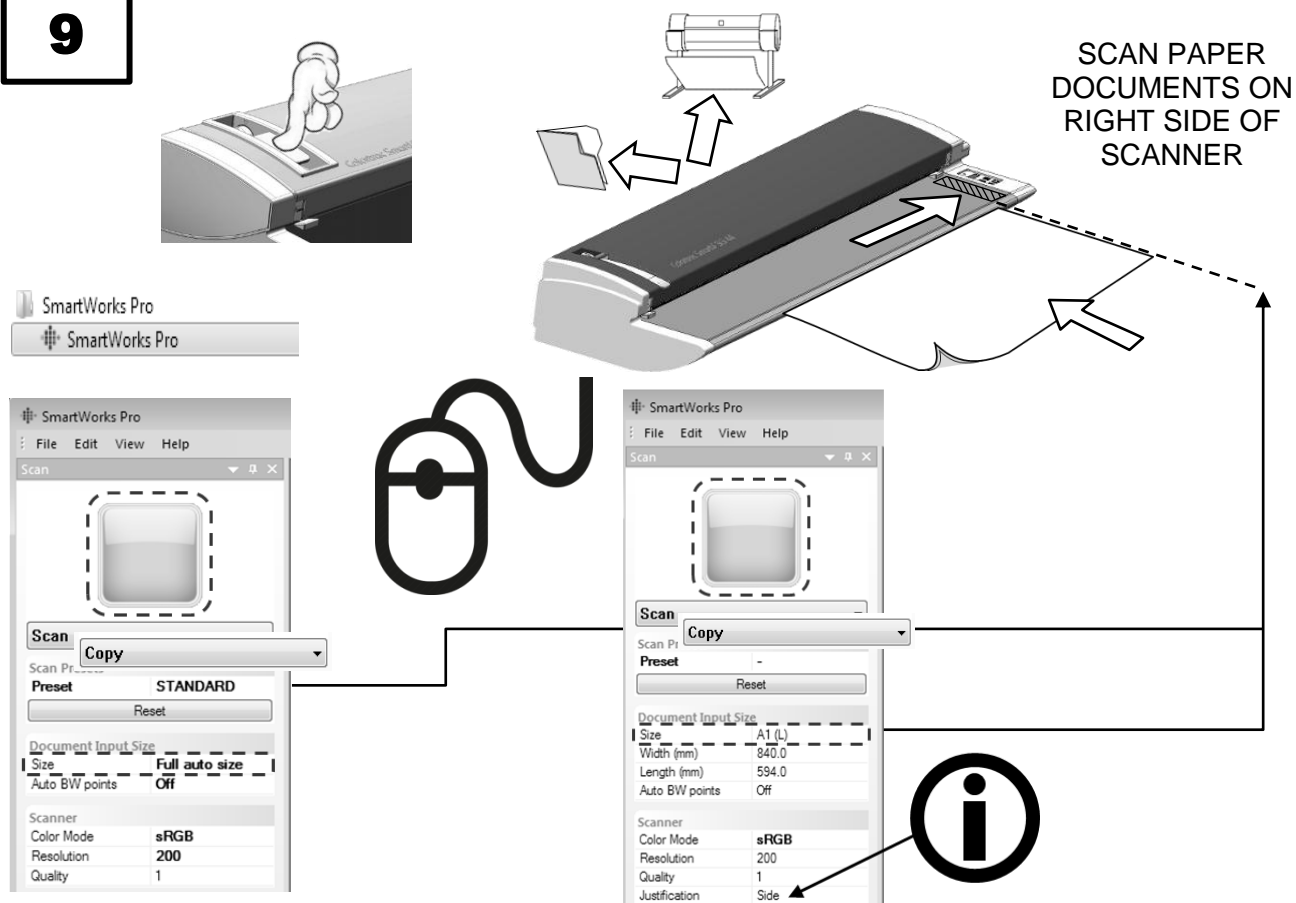
7



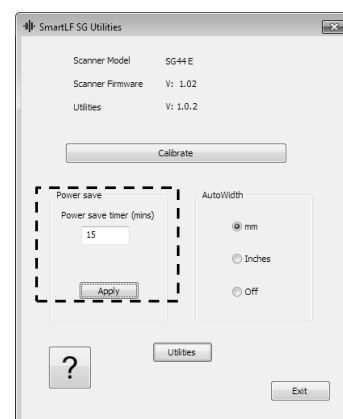
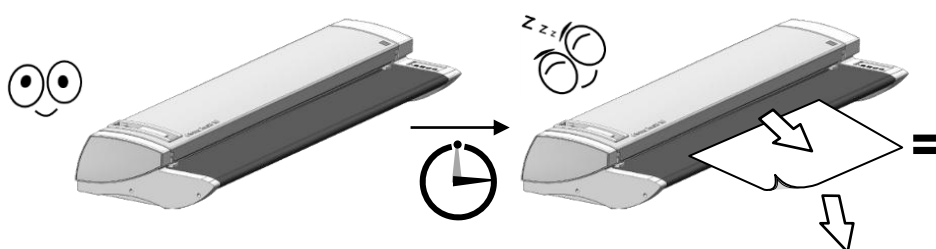
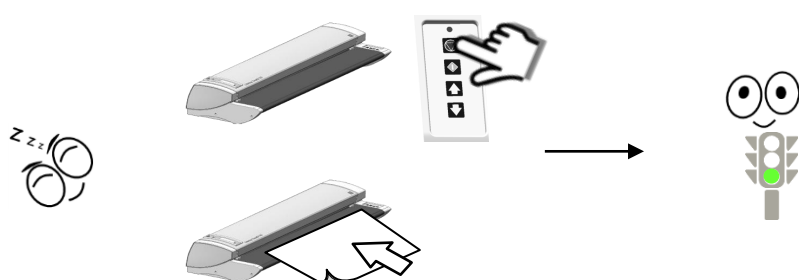
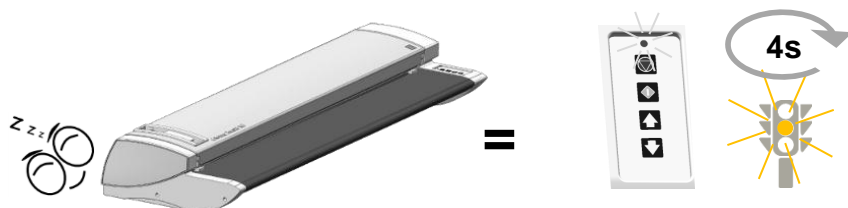
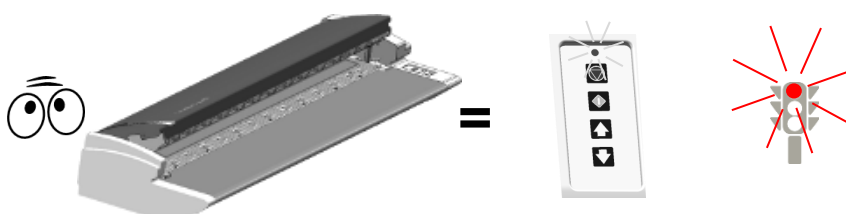
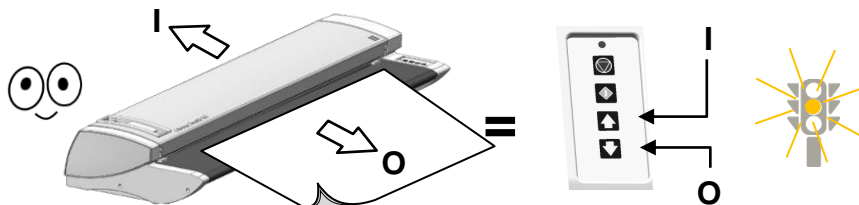
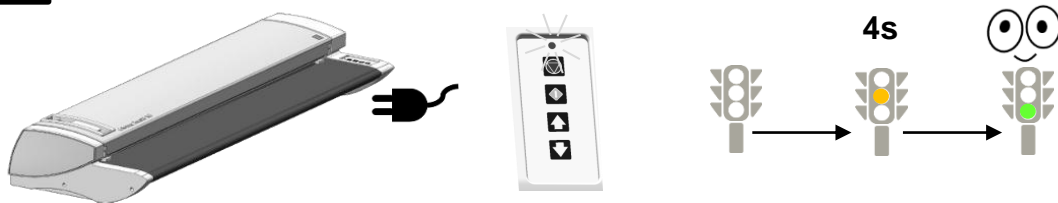
8



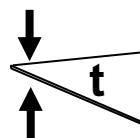
9



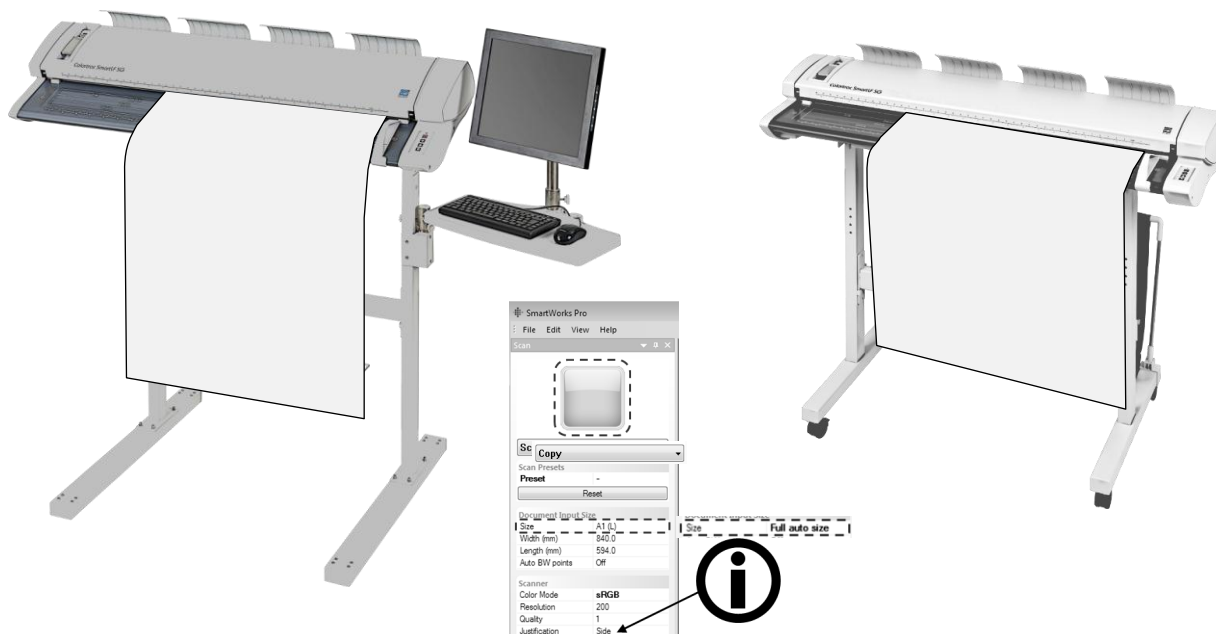
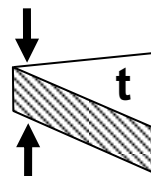
13



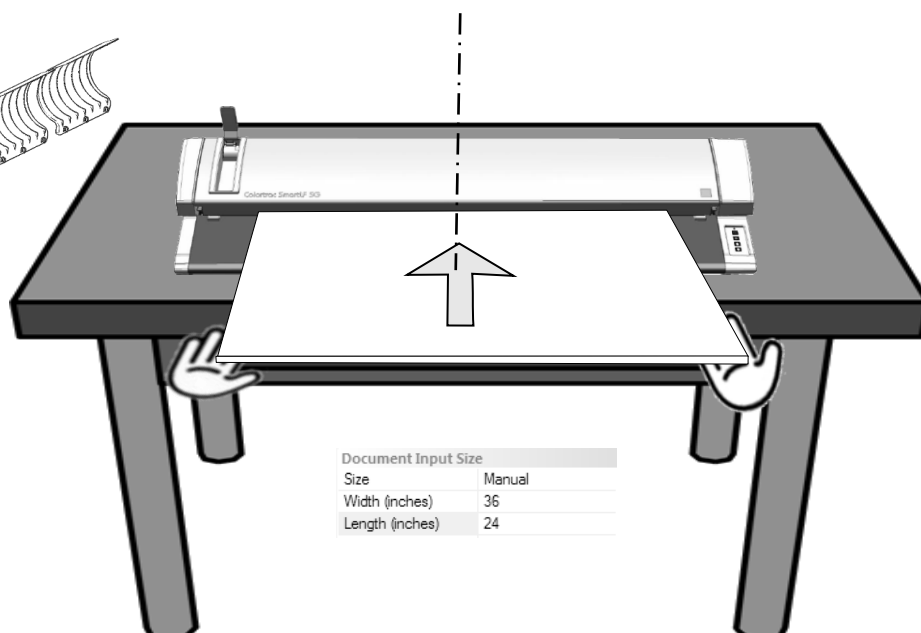
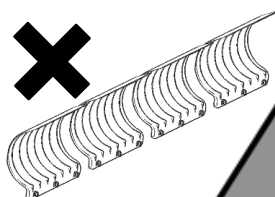
14


 $t > 3 \text{ Mil} / 0.003'' / .08\text{mm}$
 $t < 80 \text{ Mil} / 0.08'' / 2\text{mm}$


SCAN PAPER DOCUMENTS ON
RIGHT SIDE OF SCANNER


 $t > 80 \text{ Mil} / 0.08'' / 2\text{mm}$
 $t < 600 \text{ Mil} / 0.6'' / 15\text{mm}$


SCAN THICK MEDIA IN
MIDDLE OF SCANNER



Document Input Size	
Size	Manual
Width (inches)	36
Length (inches)	24

15

DECLARATION OF CONFORMITY

Manufacturer:

Colortrac Ltd

3-5 Brunel Court
Burrell Road
St Ives
Cambridgeshire
PE27 3LW
United Kingdom

Details of Electrical Equipment

Model Number: SmartLF SG

Description: Large Format Scanner

Directives this equipment complies with:

Low Voltage Directive 2006/95/EC, EMC Directive EN 55022:2010+AC:2011 (Class A)	EN55024:2010
EN 61000-3-2:2006+ A2:2009	IEC 61000-4-2:2008
EN 61000-3-3:2008	IEC 61000-4-3:2006+A1:2007+A:2010
	IEC 61000-4-4:2012
	IEC 61000-4-5:2005
	IEC 61000-4-6:2008
	IEC 61000-4-8:2009
	IEC 61000-4-11:2004

RoHS Directive 2011/65/EU

Harmonised standards applied in order to verify compliance with Directive: EN 61000-3-2:2006+A2:2009

Warning

This is a Class A product. In a domestic environment this product may cause radio interference in which case the user may be required to take adequate measures

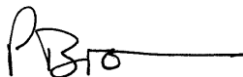
Test Report Issue by: Cerpass Technology Corp

Year in which CE mark was affixed: 2014 (Attestation Number: SECE1404047)

Signed

Date: 30th May 2014

Peter Brown
Managing Director
Colortrac Ltd
United Kingdom



Other Standards Complied with:

China Compulsory Certificate

GB4943.1-2011 GB9254-2008(Class A) GB17625.1-2012

CB Certification (IECEE) CB SCHEME

IEC 60950-1(ed.2), IEC 60950-1(ed.2);am1

Federal Communications Commission (FCC) Declaration of Electromagnetic Conformity

Standards Complied with:

ANSI C63.4-2009

CISPR PUB.22,FCC Part 15 Subpart B Class A (Verification)

UL Certification for SmartLF SG and SmartLF SG Accessories

CSA C22.2 No. 60950-1-07, 2nd Edition, 2011-12 (Information Technology Equipment - Safety - Part 1: General Requirements)

UL 60950-1, 2nd Edition, 2011-12-19 (Information Technology Equipment - Safety - Part 1: General Requirements)

SG Scanner

SG Scanner + Floor Stand

SG Scanner + Repro Stand - PC (optional) + Monitor (optional)

SG Scanner + PC Mounting Option - PC (optional) + Monitor (optional)

FOR SAFETY CONSIDERATION WEIGHTS AND SIZES MUST BE LIMITED TO:

PC – less than 15kg, maximum dimensions 43 x 42 x 18 cm

MONITOR – less than 6kg, maximum dimension 22 inches

RoHS and WEEE Directives (European Union)**SmartLF SG complies with RoHS Directive 2011/65/EU**

All Colortrac products (from mid-May 2006) have been manufactured in accordance with the RoHS (Restriction of Hazardous Substances) which imposes controls against the use of lead in solder and other substances harmful to the environment in the production of all new electrical equipment.

This symbol on the product indicates that it must not be disposed of in unsorted municipal waste. In accordance with WEEE (Waste Electrical & Electronic Equipment) it is your responsibility to hand it over to a designated collection point and ensure that it is recycled or disposed of properly at the end of its useful life. The separate collection of your waste equipment will help to conserve natural resources and ensure that it is recycled in a way that will protect human health. For more detailed information contact your local Civic Office or outlet where the equipment was purchased.

**Disclaimer**

The entire risk of the use or the result of the use of this hardware or documentation remains with the user. No part of this documentation may be reproduced or transmitted in any means, electronic or mechanical, for any purpose, except with the express prior written permission of Colortrac Ltd.

Colortrac Ltd makes no warranty claims with respect to this documentation and disclaims any implied warranties of merchantability or fitness for a particular purpose. The information contained in this document is subject to change without notice. Colortrac Ltd assumes no responsibility for errors or omissions that may appear in this documentation © Colortrac 2014.