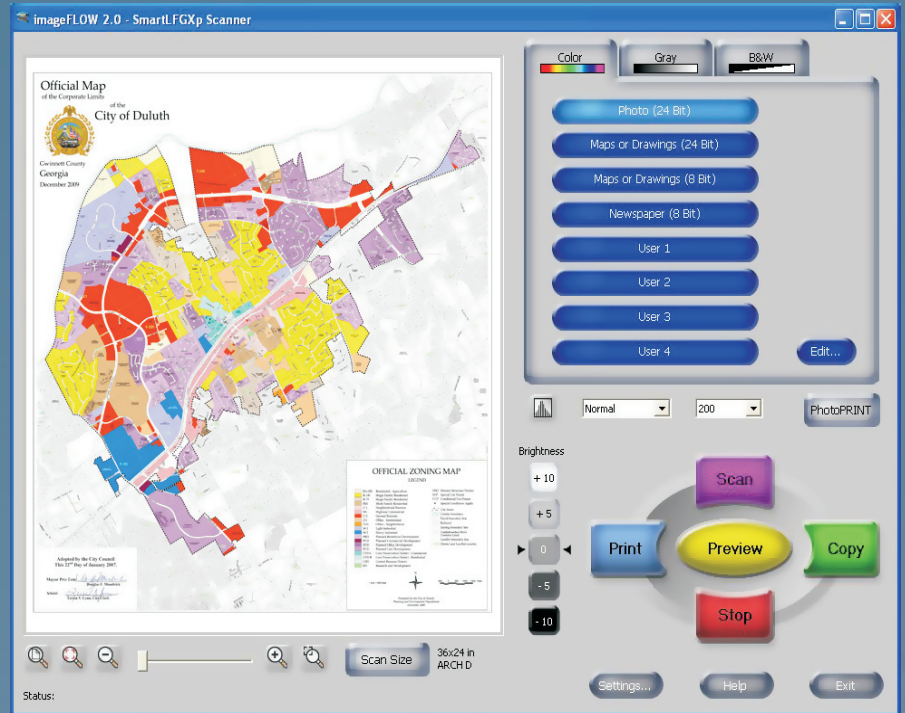


Version 2.0

Revolutionizing your document imaging work flow

Scan » Print » Copy

- Touch Screen Compatible
- Easy to Use Interface – Copy, Scan & Print
- Supports Current Graphtec and imagePRO Scanners
- Over 550 Printers Supported*
- Hot Folder Print Que
- Includes over 325 ICC Output Profiles
- ICC Profile Editing
- Print Postscript Files
- Create Job Sets



State-of-the-Art Document Imaging Software

Flexibility to upgrade in the future to PhotoPRINT DX, SERVER or SERVER-ULTRA.

Key features include:

- Preset & User editable scan settings for Color, Grayscale and B&W modes
- Image adjust controls such as Brightness & Contrast and custom image Histograms
- Interactive Scan, Print, Copy & Stop controls
- Batch Scanning mode and Create & Print job sets
- Powerful PhotoPRINT 6™ RIP Engine

Powerful yet simple to use user interface

Scanning Presets

Color 24 Bit & 8 Bit

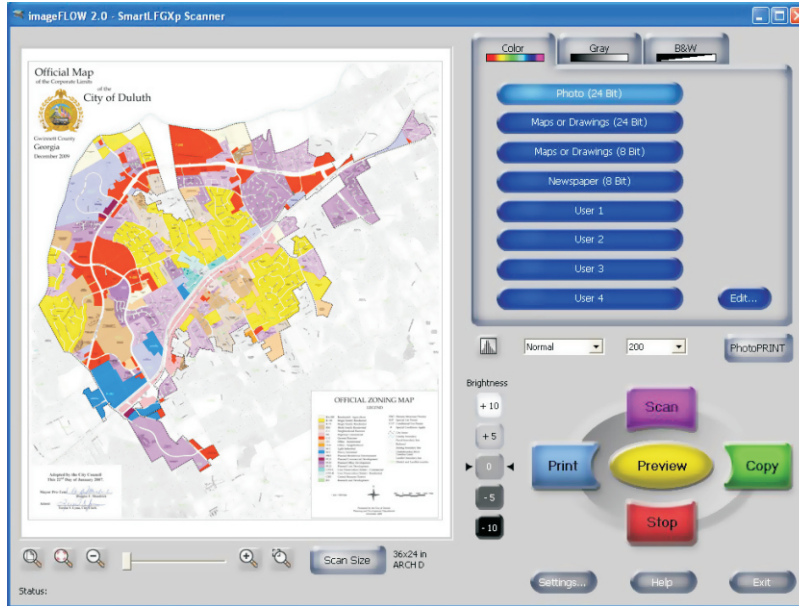
- ° Photographs
- ° Drawings
- ° Posters
- ° Maps
- ° Newspapers

Grayscale

- ° Drawings
- ° Maps
- ° Posters

B&W

- ° Drawings
- ° Light Blueprints
- ° Dark Blueprints



Color, Gray and B&W tabs

Presets

Histogram, Quality and Resolution

Controls

Viewing Tools

Size

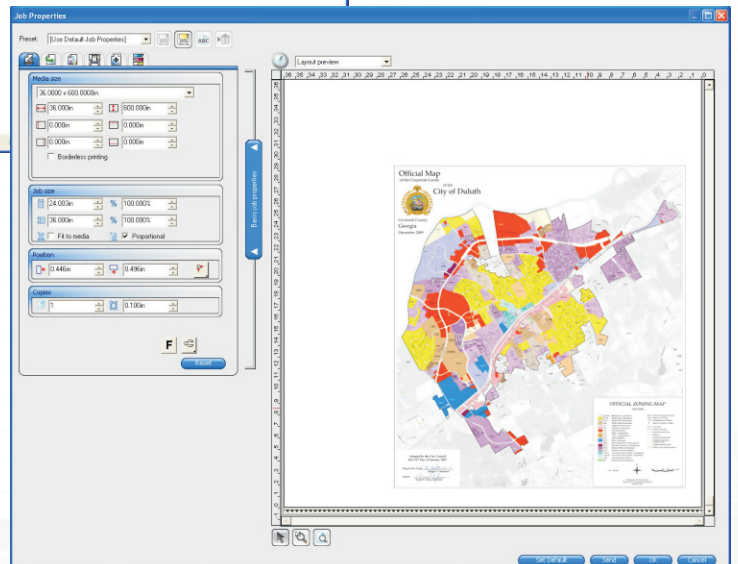
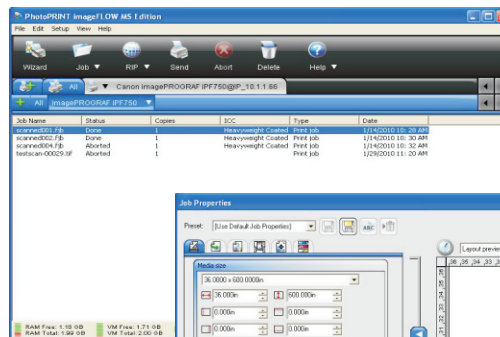
Brightness

Supported File Formats: tif uncompressed, tif LZW, tif jpg, tif G4, tif multi-page, pdf, pdf multi-page, ps, ps multi-page, eps, bmp, jpg

Powered by PhotoPRINT 6™ RIP Engine

Featuring:

- ° Hot Folder Print Que
- ° Over 550 included printer drives
- ° More than 325 Certified ICC Profiles
- ° Color Calibration Wizard for editing existing ICC Output Profiles
- ° Pantone™ Library and Custom Color Mapping
- ° Adobe® RIP Engine
- ° Adobe® PostScript® 3
- ° Presets: Import, Save, Apply & Export
- ° Custom Media Creation
- ° Utilize 3rd Party ICC Output Profiles
- ° Global Color Mapping with Pantone® Library
- ° Vividness Control
- ° Pure Hue Preservation
- ° Drag and Drop TIFFs, JPEGs and PDFs directly into the queue



Supported File Formats: TIFF, JPG, BMP, PNG, PSD, AI, EPS, PS, PRN, PDF, PSD, HPGL 2, DXF