



imageSTAR

DOCUMENT IMAGING SOLUTION

Exclusively from Paradigm Imaging Group



**Document Imaging Solution for
Seiko Teriostar LED Wide Format Printers**

LP1020 | LP1020MF

imageSTAR Software Suite

imageSTAR
DOCUMENT IMAGING SOLUTION
Exclusively from Paradigm Imaging Group



Paradigm Imaging's exclusive imageSTAR Software Suite combines two robust software packages - Paradigm's own VB INDEX and Seiko's Teriostar Software. imageSTAR is included with the purchase of all Seiko LP1020 LED plotters and multifunction copiers sold by Paradigm Imaging Group.

Key Software Modules:



Scan-to-File

Scan to File allows you to scan single page TIFF's and PDF's in color or mono selections.



Scan-to-Copy

Features the ability to directly scan to print or select a file to print. Compatible with HP and Canon large format printers, perfect for high-end color graphics.



Delivery

Delivery module allows users to scan in TIFF or PDF format to multiple folders. Create up to 100 folders.



SII • Teriostar LP1020

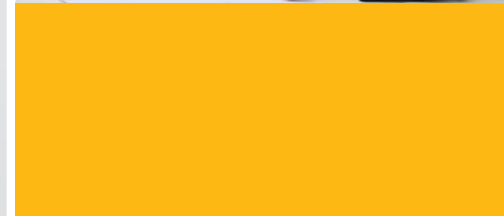
TerioPRINT

Terioprint V103 is the latest print software which allows you to batch print different file formats multiple sheets at a time, collate and print.

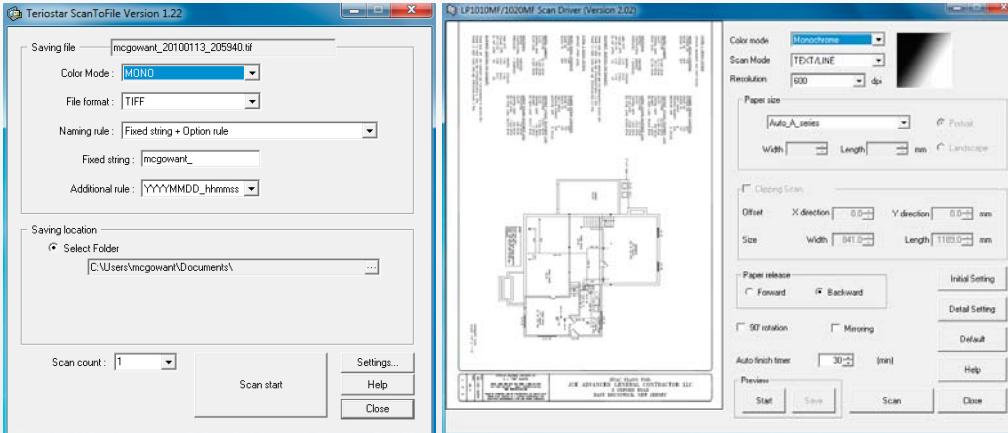


VB Index Image Indexing System

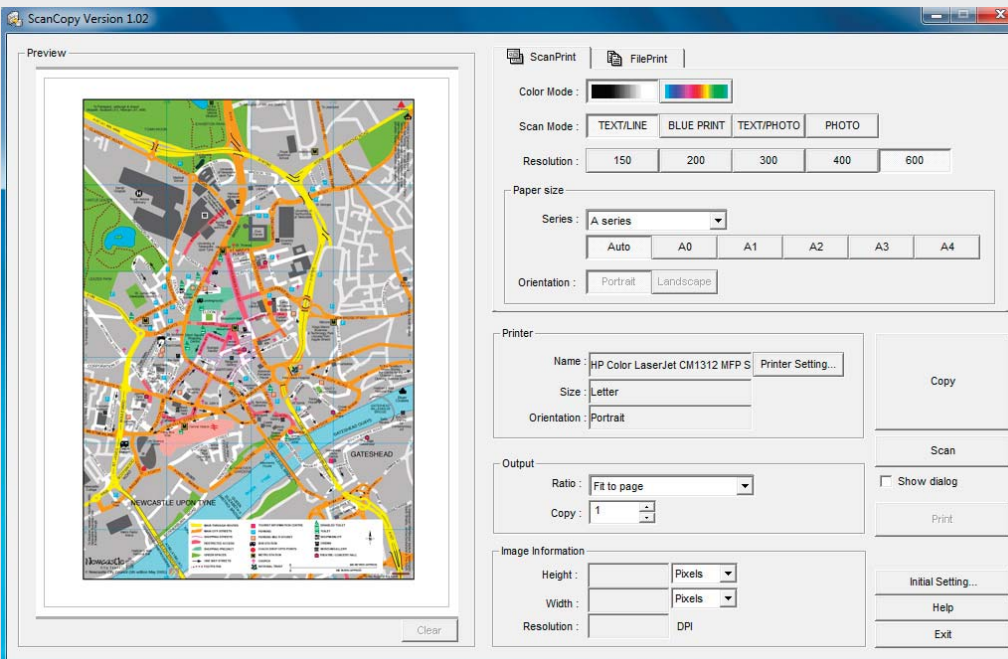
VB-INDEX makes capturing index data from scanned engineering drawings a snap! The easy to use interface automatically displays the drawing title block so drawing information can be entered into the data input window. Since VB-INDEX is a multi- user system, large amounts of data can be captured quickly from multiple workstations.



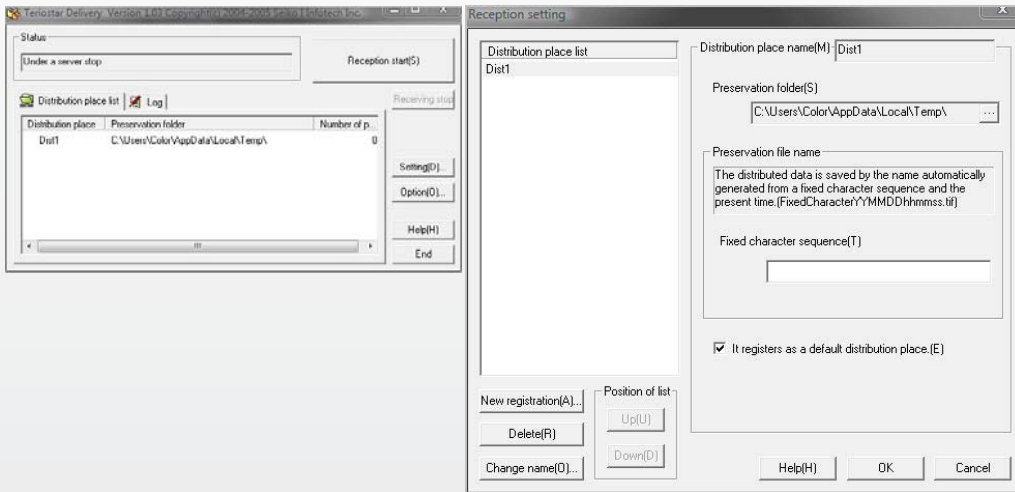
Scan-to-File



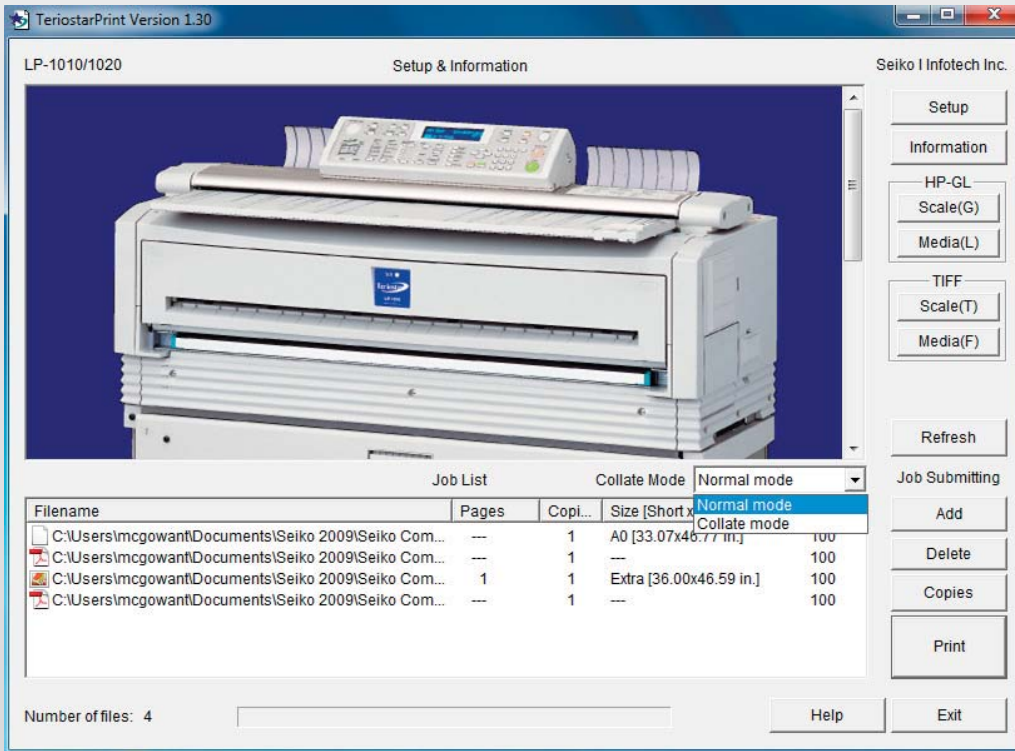
Scan-to-Copy



Delivery



TerioPRINT





VB Index

The screenshot displays the VB Index software interface. The top window shows a technical drawing of a heating and cooling system with various components and labels. Below the drawing is a table with the following data:

Category	Item	Value
HEATING SUMMARY	STRUCTURE	24,100 BTU/H
	SUCTS	4,860 BTU/H
	CENTRAL VENT	539 BTU/H
	COILS LOAD	31,462 BTU/H
	EQ SERV LOAD	16,837 BTU/H
SENSEBLE COOLING EQUIPMENT LOAD	STRUCTURE	13,607 BTU/H
	SUCTS	4,148 BTU/H
	CENTRAL VENT	145 BTU/H
	RUNNER	0 BTU/H
	EQ SERV LOAD	16,837 BTU/H

The bottom window shows a detailed table of drawing data:

Drawing ID	Name of Drawing	Sheet Number	Building/ Drawing Location	Campus	Category	Creator of Drawing	# of Sheets	Date Created	Drawing ID	General Notes	Utility Drawing	Received Drawing ID
001_PA_1	Hawkins_College_Police/Police_Building	1-1	1400_TEN		Planning		1	3/24/1982		planning site plan - house schedule		
001_M		M-1			Mechanical		1	3/24/1982		All heating and ac conditioning plans, equipment sc	Scanned	
001_E		E-1, E-8			Electrical		9	3/24/1982		Electrical site plans, single line diagrams, electrical site		
001_S		S-1, S-5			Structural		5	4/29/1982		All roof framing plans, foundation and floor framing p		
001_DSD_MCC_V		T-1,1			Title_Page		1	4/5/2002	UR_Design	site page		
001_DSD_MCC_A		A-1,1, A-4,1			Architecture		5	4/5/2002		Description site plan, new work, site plan, site details, re		
001_DSD_MCC_S		S-1, B, S-1,1			Structural		2	4/5/2002		Foundation and framing plan, structural details		
001_DSD_MCC_E		E-1,1, E-2,3			Electrical		4	4/5/2002		partial site plan layout, notes, and schedule, elec. bu		
001_DSD_MCC_L		L-1,1, L-2,1			Landscape		2	4/5/2002		landscape plan and details		
001_DCS_A		A-1, A-1,2			Architecture		6	6/7/1986		vicinity maps, sheet index, general notes, site plan, co		
001_DCS_S		S-1, S-7			Structural	profile structures inc	6	3/25/1985		roof and floor framing plan, elevations and sections for		
001_DCS_F		F-1, F-1			Foundation_Plans	profile Structures	2	6/7/1986		Foundation plans for Bldg. A, B, A, B, C, D. Foundat		
001_DCS_E		E-1, E-2, E-3			Electrical	profile Structures Inc	3	5/15/1982		electrical lighting, reflected ceiling plans, single line dia		
001_SPAHPCS		1-5, minor, L-3, 5			Signage_Site_Plans	POD_Landscape_Archtl	8	8/4/1979		site plan, schedule, signage, block, and entry signage		
001_SEASER_SDRH		1-5, L-1, L-1, L-2, L-4, L-4			Stems_Drives_Constructions	Flack_Engineering	5	6/4/1986		Title sheet, site plan		
001_ATHLETIC_FIELD		T-2			Athletic_Field	Flack_Engineering	2	5/25/1988		Title page, Grading plan	sheet 2	
001_INT_DRAWINGS_A		A-07, A-09		3400_100	Interior_Drawings	Kramer_Vincent_Living	38	6/7/83		sections/details Bldg. E, F, G, H, J, A, L, and plans A-H		
001_INT_DRAWINGS_S		S-1, S-05			Interior_Drawings	Kramer_Vincent_Living	23	6/7/83		typical concrete details, wood details, sections, detail		
001_PARKING_LOT_H		DE1			Parking_Lot_H	POD_Landscape_Archtl	1	8/5/1976		details		
001_PARKING_LOT_H		L-1, L-2			Parking_Lot_H		4	8/5/1976		planting plan, irrigation plan plans and details		
001_PARKING_LOT_H		E1		E1, E2	Parking_Lot_H		2	8/5/1976		Electrical Plans		

- Capture index data from scanned engineering drawings
- Multi-user system - capture large amounts of data from multiple workstations
- Project wizard – guides user through the process of creating index fields
- Project statistics tool – check for file/record synchronization
- Export to multiple Database formats

Seiko Terisotar LP1020/LP1020MF Product Specifications

Plotter

Imaging Method	EP LED
Output Resolution	600 dpi
Continuous Output Speed	3.4 E, 6.2 D prints per min.
Warm-up Time	8 minutes (startup) 0 minutes (standby)
Paper Feed	2 rolls, automatic feed & cut
Paper Ejection	Front
Maximum Output Width	36 Inches
Maximum Output Length	33 Feet
Margin Sizes	1/8" (R,L), 1/5" (F), 1/2" (R)
Maximum Output Area	36 Inches x 33 Feet

Scanner

Scanning Speed	2.36 Inches per second
Scanning Resolution	600 dpi
Max. Scanning Width	Max. 36", Min. 8.25"
Max. Scanning Length	33 Feet
Interface	Ethernet

Controller

RAM	256MB
HDD	40 GB
Interface	Ethernet, USB 2.0, Centronics
Network Protocol	TCP/IP
Data Format	HPGL/2, HP RTL, TIFF, CALS
Logic Port	10
Dimensions	PL: 46"(W)x22"(D)x49"(H) MF: 46"(W)x22"(D)x52"(H)

Exclusively From Paradigm Imaging Group

