



REPROCONTROL

TOTAL WORKFLOW CONTROL

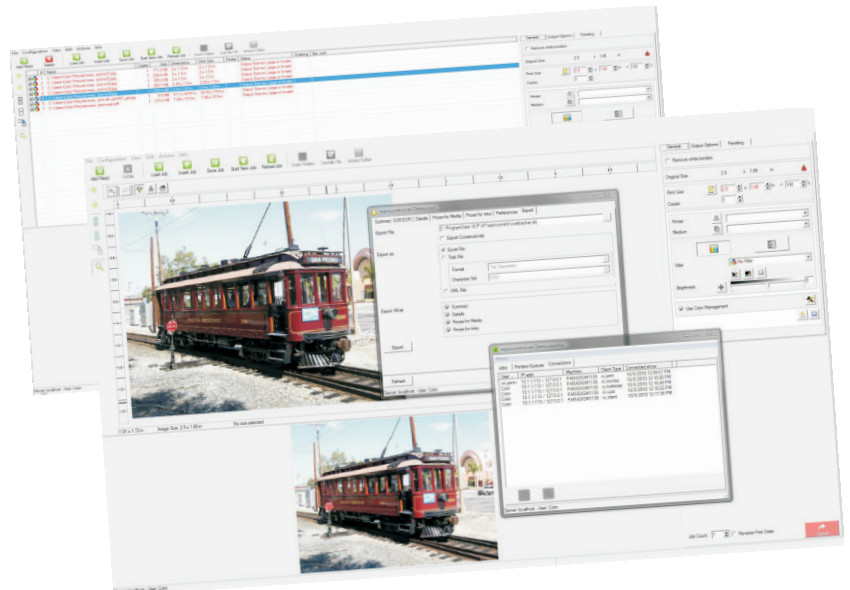
Reprocontrol.net
Reprocontrol.io

All-inclusive print management and dynamic workflow control solution

Reprocontrol is a powerful workflow management solution that is designed to adapt and respond to modern and sophisticated large format printing environments. With an array of dynamic operator controls, such as automated print settings, synchronized cost management, to remote configurations and file submission, it streamlines and optimizes your workflow in a more efficient and productive environment. Whether you operate a in-house graphics and CAD facility or a full digital reprographics studio, or even a pay-per print environment requiring complete workflow control, it is designed to meet your every need. Reprocontrol integrates with all major scanners, printers, plotters and even small format printers creating a single workflow solution maximizing your production.

Key Features:

- All-inclusive workflow management featuring job specific protocols, project cost tracking, and online transmittal and previews
- Powerful user administration tools with unlimited user accounts, user specific access to printers, queues and clusters
- Professional color management featuring ICC profiles and color calibration wizard, soft proof and gamut preview, and TruCad matching for technical documents
- Advanced printer connectivity featuring load sharing, individual configuration of printers, queues & clusters along with capacity to print mixed sets and online cost recovery monitoring of material & ink consumption
- Remote administration and Control of the entire workflow and users via LAN or internet
- Compatibility with all major file formats along with DWF and PDF/E with full support of 2D-DWF without AutoCAD licence
- Supports all major scanners, inkjet & LED printers and plotters with the ability to expand the system to support additional features and new hardware



Please see reverse for complete specifications

General Specifications

	reprocontrol.net	reprocontrol.rio
Client / server architecture	●	●
Maximum printing width	unlimited (depends on printer)	unlimited (depends on printer)
Raster	●	●
PostScript	○	○
full HPGL support (HPGL, HPGL/2, HP-PCL, HP-RTL)	●	●
full DWF support	●	●
Number of parallel printers	unlimited (defined by license)	unlimited (defined by license)
Number of parallel printer connections included	1, additional optional	1, additional optional
Online folder support	●	○
Color management across printers	●	●
Integrated spectrophotometer support	●	○
Interface small format laser printers	●	●
Concurrent users	1 included, unlimited optional	1 included, unlimited optional
Application Clients	●	●
Browser Clients	●	○
Internet access	○	○
Protocol	SOAP via TCP/IP	SOAP via TCP/IP
Best in market IT-Security (1 port only, SSL encryption)	●	●
Media saving nesting across job boundaries	●	●
Paneling / tiling	●	○
Input hotfolders	○	○
Queue management	●	●
Queue acts as printer port	●	●
Queue acts as LPD/LPR	●	●
Cluster management	●	●
Job monitor, job history	●	●
Media & calibration wizard	●	●
Live update	○	○
Preview	●	●
Gamut warning	●	●
Soft proof	●	●
Bi-directional printer communication / printer status monitor	●	●
Scale, crop	●	●
Media profiles	●	●
Languages	20	20
Spot color	●	●
File format detection	●	●
Colorspace detection	●	●
Printer driver for Windows applications	○	○
PPD driver for Mac applications	○	○
Multiple ICC profile support within one nest	●	●
Job scaling to pre-defined page sizes	●	●
Borderless printing/ Crop printer margins	●	●
Interpolation, sharpening, anti-aliasing, descreening	●	●
Printer query with media and ink recognition	●	●
Job submission with extended edit features	●	●
Seamless cost tracking	●	●
User management with specific rights	●	●
Small format scanner interface	○	○
Wide format scanner interface	○	○
Preflight Job Analysis	●	●
Automatically assign jobs to the best suitable printers	●	●
Split jobs among various printers for faster overall output	●	●
Simultaneous printing	●	●
Load balancing	●	●

● Standard ○ Optional

Paradigm Imaging Group - Distributor of Large Format Scanning & Printing Solutions

3010 Red Hill Avenue, Costa Mesa, CA 92626 | 888.221.SCAN(7226) or 714.432.7226 in Canada

www.SCANtopia.com or info@paradigmimaging.com