

**NEW!**



Add a large-format printer to complete the solution of YOUR choice

## Scan, Copy & Print Large Format Documents.

*Whenever you need them!*

The NEW Colortrac Flex SC Xpress Series includes the REVOLUTIONARY SmartLF SC 25c, SC 36c and SC 42c scanners from Colortrac. With higher quality imaging, higher scanning speed and SuperSpeed data transfer, the SmartLF SC Series of scanners provides fast, high quality scans or copies of wide format maps, site plans, engineering drawings, blueprints, architectural renderings and many other technical documents.

- 25", 36" and 42" scan width and 1200dpi optical with 9600dpi maximum resolution
- SingleSensor technology with extra long-life, instant-on Bi-directional LED illumination (superior to fluorescent lighting)
- SuperSpeed USB3.0 providing up to 5Gb/sec data transfer
- SmartWorks TOUCH SCAN/COPY/EMAIL (the SC 42c includes SmartWorks Pro Scan & Copy)
- High speed scans at 13 ips (mono) and 6.0 ips (color)
- Reliable paper feed from advanced full width single driven hold-up roller
- Fast, high quality scans from power-on, no warm-up, no waiting
- Rocket Scanner Controller (FlexPRO models Only).

SENSOR	SCAN SIZE	OPTICAL DPI	MAX DPI	INTERFACE	INSTANT ON	PAPER LOAD
SINGLE SENSOR	Up to 42"	1200	9600	USB 3	YES	UP

# Colortrac SmartLF Flex SC Series

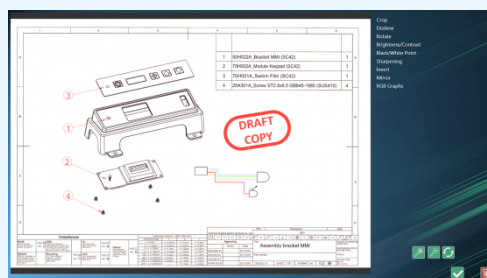


The SmartLF Flex SC Series offers the utmost in flexibility, offering your choice of scan widths from 25", 36" or 42". The Repro Stand provides 4 height adjustments with clearance to accommodate printers from 39" to 45" high. The Flex SC Series enables you to turn your existing large format Canon, HP or Epson printer into a complete multi-function system for most all of your scanning, copying and printing needs. The Flex SC Series comes in two basic configurations. The Flex Base model allows you to utilize your own PC and printer where the Flex Pro model includes the Rocket II controller. Just add a printer for a complete MFP solution. That's FLEXibility!

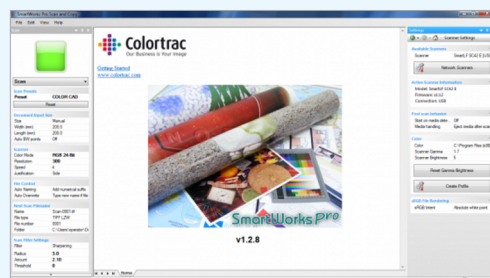
SPECIFICATIONS	SC 25c Flex Base/Pro	SC 36c Flex Base/Pro	SC 42c Flex Base/Pro
Optical Resolution	1200 dpi	1200 dpi	1200 dpi
Extended Resolution	9600 dpi	9600 dpi	9600 dpi
Max Scan Width	25in (63.5cm)	36in (91.4 cm)	42in (106.7cm)
Max Media Width / Thickness	27in (68.6cm) / 0.08" (2.0 mm)	38in (96.5 cm) / 0.08" (2.0 mm)	44in (111.6cm) / 0.08" (2.0 mm)
Scan Accuracy	+/-0.1% +/-1 pixel	+/-0.1% +/-1 pixel	+/-0.1% +/-1 pixel
Imaging Technology	New <b>SingleSensor</b> digital imaging technology is a Colortrac invention that combines CIS technology in a single line array with a full width straight line image sensor of 43,200 pixels and a Bi-directional long-life LED lighting system .		
Data Capture (color/grayscale)	16-bit	16-bit	16-bit
Color Space	Raw RGB from scanner sRGB using SmartWorks EZ Touch Profiled RGB from SmartWorks Pro (SC 42c Flex)		
Scan Speed - 8-bit grayscale/mono (inch/sec) @200dpi	13 ips	13 ips	13 ips
Scan Speed - 24-bit color (inch/sec) @200dpi	6 ips	6 ips	6 ips
Paper Path	Face-up, front entry, rear exit or rewind to front		
Interface	SuperSpeed USB 3.0 with upto 5Gb/sec transfer rate (using maximum 3m length cable)		
Power Requirements	External power supply 100~240VAC auto-sensing +/-10%, 50-60Hz Scanner power consumption:		
Included Software	SmartWorks TOUCH	SmartWorks TOUCH	SmartWorks Pro Scan & Copy
Rocket ONE Controller (Available on the Flex Pro only)	Rocket Controller - 3.1Ghz core processor (64-bit Processing), 4GB of RAM (upgradable), 500 GB hard drive. Integrated 10/100/1000 Gigabit Ethernet, Full Size Keyboard & Mouse and DVD writer. Windows 10 Professional 64-bit - optional touchscreen available.		
Warranty	1-Year Onsite	1-Year Onsite	2-Year Onsite

SC Flex Base Includes: SmartLF SC 25, SC 36 or SC 42 scanner, external scanner power supply, USB 3 cable, document return guides, adjustable Repro Stand with keyboard tray and monitor mounting bracket, SmartWorks TOUCH (SC 25 & SC 36), SmartWorks Pro Scan & Copy (SC 42), Rocket scanner controller (Pro model only). The Repro Stand height is adjustable through four height variations allowing maximum printer heights between 39in (988 mm) and 45in (1143 mm)

Specifications subject to change.



SmartWorks TOUCH (Flex models SC 25c & SC 36c)



SmartWorks Pro Scan & Copy (Flex SC 42c)



3010 Red Hill Avenue, Costa Mesa, CA 92626  
888.221.7226 • [WWW.PARADIGMIMAGING.COM](http://WWW.PARADIGMIMAGING.COM)

