

GRAPHTEC

CSX550-09

36" Full-Color Image Scanner

Luxios Multi-Sensor Control

Hi-Speed 64bit Imaging | 48bit Color | Adobe RGB Mode

CIS Scanning Technology

1200dpi optical resolution, 9600dpi max.

Scan speeds up to 12 ips (mono) & 4 ips (full-color) at 400dpi

Face-up document scanning

0.1% scanning accuracy

LUXIOS
High speed, Real Image Scan Engine.

GRAPHTEC

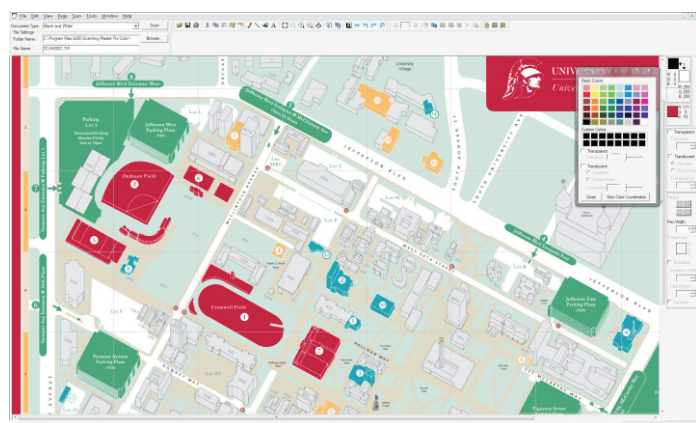
Experience the Graphtec Advantage!

1 YEAR
ON-SITE
WARRANTY

CSX550-09 Specifications

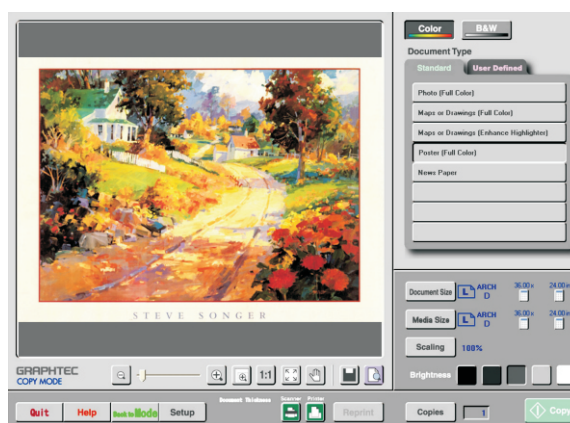
Document thickness	Max. 1.6 mm, Min. 0.05 mm
Margin	0 mm (+/- 0.5 mm)
Scanning system	Main: Contact image sensor (CIS), five A4-size sensors are arranged in a zigzag pattern Sub: Feeding document
Document loading	Face-up
Optical resolution	1200 dpi
Interpolated resolution	upto 9600 dpi
Max. Scan Speed @ 400 dpi	
Monochrome	12 ips
Gray	12 ips
Color	4 ips
Scanning accuracy	plus or minus 0.1 %
Gradation	Monochrome: Bi-level, Intermediate tones (dithering, error diffusion); Gray: 256 shades; Gray (RGB): 256 shades; Color: 24-bits
Color space	sRGB, AdobeRGB
Sensor	Number of pixel: 22,020 pixels; Output: Color 48-bits/pixel, Gray 16-bits/pixel; Light source: LED (RGB)
Interface	USB2.0 (Hi-speed), LAN (10BASE-T/100BASE-TX/1000BASE-T)
Output	Image data
Power source	100 V to 120 V AC, 200 V to 240 V AC (+/- 10%), 50/60Hz
Operating environment	Temp.: 10 to 35 degree centigrade; Humidity: 25 to 80 % RH (Non-condensing)
Storage environment	Temp.: -20 to 50 degree centigrade; Humidity: 0 to 95 % RH (Non-condensing)
Power consumption	55 W or less (3 W or less in power save mode)
External dimensions (W x H x D)	Without Stand: approx. 1,097 mm x 160 mm x 322 mm; With Stand: approx. 1,097 mm x 972 mm x 717 mm
Weight	Without Stand: approx. 25 kg; With Stand: 39 kg
Supported standards	UL60950 & FCC Part15 class B (USA), CE (Europe), CCC (China)
Included Software	Scanning Master PRO Color, Scanning Arts 2 for WIN
Supported OS for Software	Windows 7 -10 (32-bits & 64-bits), Windows Vista (32-bits & 64-bits), Windows XP Home Edition Professional (32-bits & 64-bits), Windows 2000 Professional

Scanner MasterPRO Color



Scanning Master PRO Color software enables easy editing and management of image files. It has useful features for file management and file sharing such as image linking, auto de-skew, auto de-speckle, background color suppression, re-touching and deleting together with search function, thumbnail view and display tree of image files.

Scanning Arts2 for WIN



Scanning Arts 2 software can easily combine existing large-format printers and Graphtec scanners into a large format copy system. Featuring an intuitive and easy to use interface, you can quickly scan, print and copy documents with configurable settings such as document type, size and color and monochrome.